



Copure® Chromatography Vials and Caps

Copure® Chromatography vials are made of high-performance borosilicate glass, suitable for various brands of auto-samplers. We offer a variety of vials and caps to meet the specific needs of different experiments.

CONTENTS

Why Choose Copure® Sample Vials and Caps ?

01 Economical Sample Vials and Caps	01
02 High-Performance Materials	01
03 Wide Applicability and High Compatibility	01
04 Complete Specifications	01

Selection Guide for Copure® Sample Vials and Caps 02

Autosampler Vials and Caps

8-425 2 mL Narrow-neck Screw-thread vials and Inserts	04
Caps with Septa for 8-425 Screw-thread Vials	04
9-425 2 mL Screw-thread Vials and Inserts	05
Caps with Septa for 9-425 Screw-thread Vials	06
10-425 2 mL Wide Screw-thread Vials	07
Caps with Septa for 10-425 Screw-thread Vials	07
11 mm 2 mL Snap-top Vials	08
Caps with Septa for 11 mm Snap-top Vials	08
11 mm 2 mL Crimp-top Vials	09
Caps with Septa for 11 mm 2 mL Crimp-top Vials	09
13-425 4 mL Screw-thread Vials	10
Caps with Septa for 13-425 4 mL Screw-thread Vials	10

Headspace Vials

18 mm Screw-thread Headspace Vials	11
Caps with Septa for 18 mm Screw-thread Headspace Vials	11
20 mm Crimp-top Headspace Vials	12
Caps with Septa for 20 mm Crimp-top Headspace Vials	12

Storage Vials

15-425 Screw-thread Storage Vials	13
Caps with Septa for 15-425 Screw-thread Storage Vials	13
18-400 Screw-thread Storage Vials	14
Caps with Septa for 18-400 Screw-thread Storage Vials	14
24-400 Screw-thread Storage Vials	15
Caps with septa for 24-400 Screw-thread Storage Vials	15
20 mL Low Borosilicate Glass Scintillation Vials	16
Caps with Septa for 20 mL Low Borosilicate Glass Scintillation Vials	16
Manual Crimpers & Manual Decappers for Aluminum Caps	16

Why Choose Copure® Sample Vials and Caps?

01 Economical Sample Vials and Caps

- By selecting the cost-effective Copure® sample vials and cap combinations, you can reduce costs while meeting laboratory requirements. Copure® sample vials and caps offer reliable quality at an affordable price, making them an ideal choice for laboratory procurement.

02 High-Performance Materials

- Our sample vials are made from high-performance borosilicate glass, ensuring superior chemical resistance and thermal stability to meet various experimental needs.

03 Wide Applicability and High Compatibility

- The sample vials are designed to be compatible with a wide range of instruments, including Agilent, Waters, Thermo Fisher, and all other brands of auto-samplers. This ensures flexibility and ease of use in the laboratory.

04 Complete Specifications

- We provide a full range of sample vials and caps to meet the specific needs of different experiments, offering you a one-stop solution.



Selection Guide for Copure® Sample Vials and Caps

I. Selection of Sample Vials

Considering the compatibility and stability of analytes and solvents, you may refer to the following recommendations for selecting vial materials:

1. For light-sensitive samples, choose amber glass vials to prevent photodegradation.
2. For small-volume samples, it is recommended to use vials with micro-inserts or high-recovery vials to maximize the sample height.
3. For ion analysis, polypropylene vials are recommended.
4. For the analysis of PFAS (per- and poly-fluoroalkyl substances), polypropylene vials are recommended.

II. Selection of Septa

1. Choose the appropriate septa to ensure sample purity and protect the autosampler syringes.

PTFE: Provides excellent chemical resistance and solvent durability. Suitable for single-use only. Non-resealable. Max tolerance temperature: 260° C.

PTFE/Silicone: Provides excellent resealability and chemical resistance, making it suitable for repeated injections. It is the preferred choice for most GC/HPLC applications. Max tolerance temperature: 200° C. Recommended for sample storage.

Pre-Slit PTFE/Silicone: Suitable for blunt or fine tips, prevents the tips from blocking and avoids vacuum formation inside the vials. Max tolerance temperature: 200° C.

PTFE/Silicone/PTFE: Excellent resealability, suitable for multiple injections, and prevents silicone shedding. Max tolerance temperature: 200° C.

PTFE/Rubber: Easy to pierce, moderate resealability, cost-effective. Maximum tolerance temperature: 85° C.

Chemical Compatibility Chart for Different Septa Materials

Chemical Solvents	PTFE	PTFE/Silicone	PTFE/Silicone/PTFE	PTFE/Rubber
Acetonitrile	◆	◆	◆	◆
n-Hexane, n-Heptane	◆		◆	◆
Methanol	◆	◆	◆	◆
Benzene	◆		◆	
Tetrahydrofuran (THF)	◆		◆	
Toluene	◆		◆	
Dimethylformamide (DMF)	◆	◆	◆	
Dimethyl sulfoxide (DMSO)	◆	◆	◆	
Diethyl Ether	◆	◆	◆	
Dichloromethane	◆		◆	
Ethanol	◆	◆	◆	◆
Acetic Acid	◆	◆	◆	
Acetone	◆	◆	◆	
Phenol	◆	◆	◆	
Cyclohexane	◆		◆	◆

III. Selection of Caps

There are three types of caps for sample vials: screw-thread caps, crimp-top caps, and snap-top caps.

Screw-thread caps: These screw caps provide excellent sealing, are reusable and easy to apply and remove by hand. No tools are needed for assembly. We have screw cap vials in different sizes. For example, 8-425 means the vial has a screw thread with an 8mm-ish outer diameter and a thread type of 425.

Crimp-top Caps: These caps provide excellent sealing and effectively prevent sample evaporation. They require a crimping tool for application. For small quantities, a manual crimper is recommended. For larger quantities, an automatic crimper is recommended.

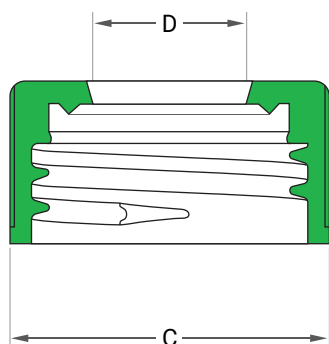
Snap Caps: These extend the crimp cap sealing method but offer less sealing effectiveness than the other types. However, snap vials are easier to use, as no tools are needed for sealing or unsealing. You'll hear a crisp "ka" sound when the cap is properly sealed. Snap vials can be sealed with either snap caps or crimp caps.

IV. Instrument Compatibility for Autosampler Vials

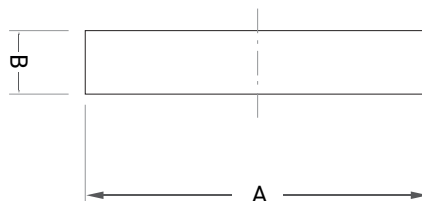
The table below offers you convenient access to check the compatibility of different vial types with common instruments.

Manufacture	Automated Sample Injector	8-425 Screw-thread Vials	9-425 Screw-thread Vials	13-425 Screw-thread Vials	11mm Snap-top/Crimp top	Headspace Vial
Waters	717 Plus				◆	
	Acquity	◆	◆		◆	
	Alliance 2690	◆	◆			
	CapLC	◆	◆			
	WISP				◆	
Shimadzu	AOC14/1400,AOC8B/9	◆	◆		◆	
	AOC-20		◆	◆	◆	
	AOC-5000	◆	◆		◆	
	HSS-2B/4B					◆
	LC 2010	◆	◆		◆	
	SIL-10A/10Ai/10xL	◆	◆			
	SIL-HT/10ADVP	◆	◆		◆	
Thermo Fisher Scientific/DIONEX	Surveyor LC	◆	◆		◆	
	AS 3000/Trace GC		◆		◆	
	TriPlus		◆		◆	
Agilent Technologies	1050/1090/110/1200		◆		◆	
	1260 G1329B		◆		◆	
	5880/5890/6850/6890		◆		◆	
	7673A/7683A/7820A/7890A		◆		◆	
	7693A		◆	◆		
	G1888A/HS7694			◆		◆
Perkinelmer	Autosystem GC/XL/AS-2000	◆	◆	◆	◆	
	Claru 500/600		◆		◆	
	HS 16/40, Turbo Matrix 40/110					◆
	Integral 4000	◆	◆		◆	
	ISS-100/200	◆	◆		◆	
	LC 600, 42 vial tray		◆			
	LC Pllus	◆	◆	◆		

V. Sample Vial Dimensions Measurement Diagram



Screw the seal onto the screw cap vial.
 C= The diameter of the caps
 D= Center hole



Septa only
 A= The diameter of the septa
 B= Septa thickness

Autosampler Vials and Caps

8-425 2 mL Narrow-neck Screw-thread Vials and Inserts

The 8-425 screw cap vial is designed for use with autosamplers that require smaller-opening vials. It is commonly used with Shimadzu, Varian, and other automated samplers.



V1-T



V1-TL



V1-A



V1-AL



SI-1



SI-3

8-425 Narrow-Neck Screw Vial Compatible with 8-425 Vial Inserts

Cat. #	Description	O.D.xL	Qty.
V1-T	2 mL 8-425 Narrow-Neck Screw-thread vials, clear	11.6×32 mm	100/PK
V1-TL	2 mL 8-425 Narrow-Neck Screw-thread vials with write-on spot, clear	11.6×32 mm	100/PK
V1-A	2 mL 8-425 Narrow-Neck Screw-thread vials, amber	11.6×32 mm	100/PK
V1-AL	2 mL 8-425 Narrow-Neck Screw-thread vials with write-on spot, amber	11.6×32 mm	100/PK
SI-1	150 uL Glass inserts with mandrel interior and polypropylene feet, for 8-425 screw-thread vials	29×5 mm	100/PK
SI-3	250 uL Flat-bottom glass inserts, for 2ml 8-425 screw-thread vials	31×5 mm	100/PK

Caps with Septa for 8-425 Screw-thread Vials



SC1-1



SC1-2



SC1-3



SC1-4



SC1-5



SC1-6



SC1-9



SC1-14

Cat. #	Description	Qty.
SC1-1	8-425 Black polypropylene screw caps (5.5 mm centre hole, 12 mm diameter) with white PTFE/red silicone septa (φ8*1.5 mm)	100/PK
SC1-2	8-425 Black polypropylene screw caps (5.5 mm centre hole, 12 mm diameter) with red PTFE/white silicone septa(φ8*1.5 mm)	100/PK
SC1-3	8-425 Black polypropylene screw caps (5.5 mm centre hole, 12 mm diameter) with red PTFE/white silicone/red PTFE septa(φ8*1.5 mm)	100/PK
SC1-4	8-425 Black polypropylene screw caps (5.5 mm centre hole, 12 mm diameter) with blue PTFE/white silicone septa (φ8*1.5 mm)	100/PK
SC1-5	8-425 Black polypropylene screw caps (5.5 mm centre hole, 12 mm diameter) with pre-slit white PTFE/red silicone septa	100/PK
SC1-6	8-425 Black polypropylene screw caps (5.5 mm centre hole, 12 mm diameter) with pre-slit red PTFE/white silicone septa	100/PK
SC1-7	8-425 Black polypropylene screw caps (5.5 mm centre hole, 12 mm diameter) with pre-slit blue PTFE/white silicone septa, 5.5mm hole	100/PK
SC1-9	8-425 White polypropylene screw caps (5.5 mm centre hole, 12 mm diameter) with red PTFE/white silicone septa(φ8*1.5mm)	100/PK
SC1-14	8-425 Black polypropylene screw caps (12 mm diameter) with with red PTFE/white silicone septa (φ8*1.2 mm)	100/PK

If you need additional models, we can assemble and adjust them based on different septa and caps.

9-425 2 mL Screw-thread Vials and Inserts

The screw-thread vial with a 9 mm diameter is the most commonly used 2 mL vial. It is compatible with most autosamplers from Agilent, Waters, Thermo Fisher, PerkinElmer, and others.



V2-T



V2-TL



V2-A



V2-AL



V2-TL-H



V2-PC-2



V2-PA-2



V2SI-T



V2SI-TL



V2SI-A



V2SI-AL



V2-P



V2-PA



SI-2



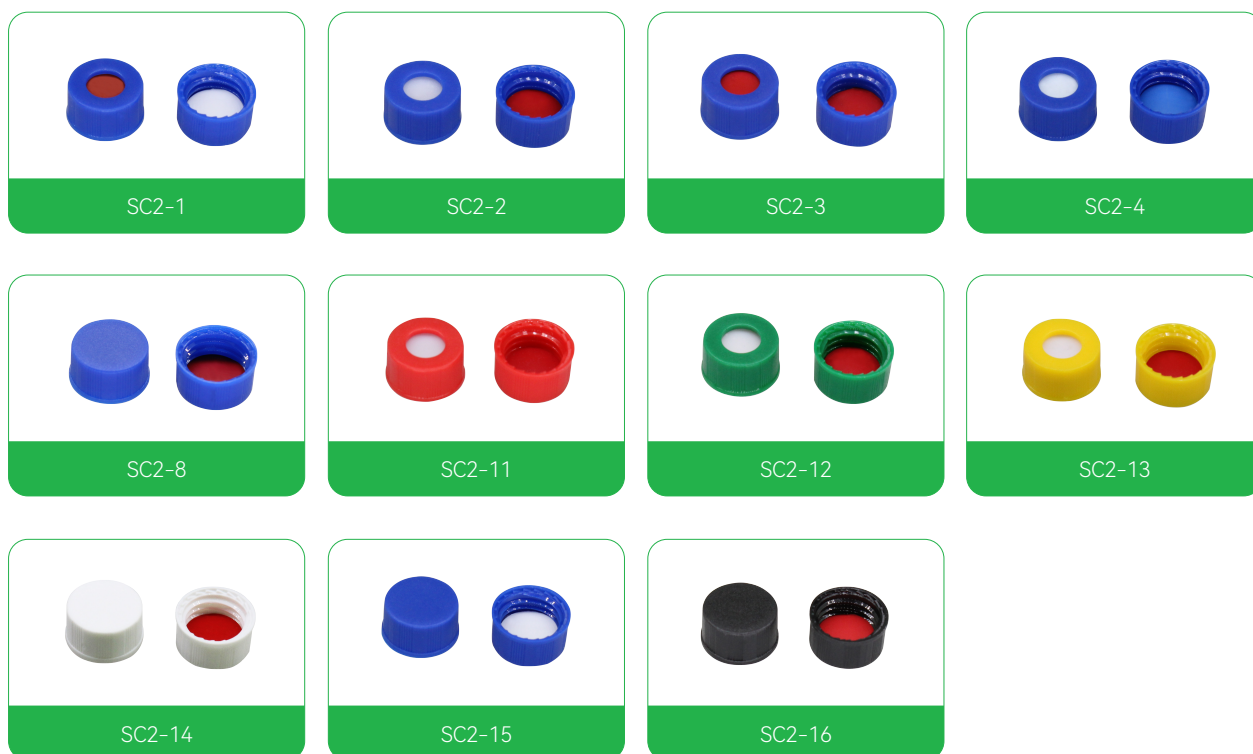
SI-4



SI-8

Cat. #	Description	O.D.xL	Qty.
V2-T	2 mL 9-425 screw-thread vials, clear	11.6×32 mm	100/PK
V2-TL	2 mL 9-425 screw-thread vials with write-on spot, clear	11.6×32 mm	100/PK
V2-TL-N	2 mL 9-425 screw-thread vials with write-on spot, clear, economic glass	11.6×32 mm	100/PK
V2-A	2 mL 9-425 screw-thread vials, amber	11.6×32 mm	100/PK
V2-AL	2 mL 9-425 screw-thread vials with write-on spot, amber	11.6×32 mm	100/PK
V2-AL-N	2 mL 9-425 screw-thread vials with write-on spot, amber, economic glass	11.6×32 mm	100/PK
V2-TL-H	2 mL 9-425 screw-thread vials, clear, high recovery	11.6×32 mm	100/PK
V2-PC-2	2 mL 9-425 PP vials, clear	11.6×32 mm	100/PK
V2-PA-2	2 mL 9-425 PP vials, amber	11.6×32 mm	100/PK
V2SI-T	300 uL 9-425 Clear screw-thread vials with fixed insert	11.6×32 mm	100/PK
V2SI-TL	300 uL 9-425 Clear screw-thread vials with write-on spot, with fixed insert	11.6×32 mm	100/PK
V2SI-A	300 uL 9-425 Amber screw-thread vials with fixed insert	11.6×32 mm	100/PK
V2SI-AL	300 uL 9-425 Amber screw-thread vials with write-on spot, with fixed insert	11.6×32 mm	100/PK
V2-P	300 uL 9-425 Clear PP short screw-thread micro-sample vial	11.6×32 mm	100/PK
V2-PA	300 uL 9-425 Amber PP short screw-thread micro-sample vial	11.6×32 mm	100/PK
SI-2	250 uL Glass inserts with mandrel interior and polypropylene feet, for 9-425 screw-thread vials	29×6 mm	100/PK
SI-4	300 uL Flat-bottom glass inserts, for 9-425 screw-thread vials	31×6 mm	100/PK
SI-8	250 uL Glass inserts with mandrel interior, for 2 mL 9-425 screw-thread vials	31×6 mm	100/PK

Caps with Septa for 9-425 Screw-thread Vials



Cat. #	Description	Qty.
SC2-1	9-425 Blue polypropylene screw caps (6 mm centre hole, 12 mm diameter) with white PTFE/red silicone septa, 6 mm hole ($\phi 9 \times 1$ mm)	100/PK
SC2-2	9-425 Blue polypropylene screw caps (6 mm centre hole, 12 mm diameter) with red PTFE/white silicone septa, 6 mm hole ($\phi 9 \times 1$ mm)	100/PK
SC2-3	9-425 Blue polypropylene screw caps (6 mm centre hole, 12 mm diameter) with red PTFE/white silicone/red PTFE septa, 6 mm hole ($\phi 9 \times 1$ mm)	100/PK
SC2-4	9-425 Blue polypropylene screw caps (6 mm centre hole, 12 mm diameter) with blue PTFE/white silicone septa, 6 mm hole ($\phi 9 \times 1$ mm)	100/PK
SC2-5	9-425 Blue polypropylene screw caps (6 mm centre hole, 12 mm diameter) with pre-slit white PTFE/red silicone septa ($\phi 9 \times 1$ mm)	100/PK
SC2-5-Z	9-425 Blue polypropylene screw caps (6 mm centre hole, 12 mm diameter) with fixed pre-slit white PTFE/red silicone septa ($\phi 9 \times 1$ mm)	100/PK
SC2-6	9-425 Blue polypropylene screw caps (6 mm centre hole, 12 mm diameter) with pre-slit blue PTFE/white silicone septa ($\phi 9 \times 1$ mm)	100/PK
SC2-6-Z	9-425 Blue polypropylene screw caps (6 mm centre hole, 12 mm diameter) with fixed pre-slit blue PTFE/white silicone septa ($\phi 9 \times 1$ mm)	100/PK
SC2-8	9-425 Blue polypropylene closed top screw caps (12 mm diameter) with red PTFE/white silicone septa ($\phi 9 \times 1$ mm)	100/PK
SC2-9	9-425 Blue polypropylene screw caps (6 mm centre hole, 12 mm diameter) with pre-slit red PTFE/white silicone septa ($\phi 9 \times 1$ mm)	100/PK
SC2-11	9-425 Red polypropylene screw caps (6 mm centre hole, 12 mm diameter) with red PTFE/white silicone septa, 6 mm hole ($\phi 9 \times 1$ mm)	100/PK
SC2-12	9-425 Green polypropylene screw caps (6 mm centre hole, 12 mm diameter) with red PTFE/white silicone septa, 6 mm hole ($\phi 9 \times 1$ mm)	100/PK
SC2-13	9-425 Yellow polypropylene screw caps (6 mm centre hole, 12 mm diameter) with red PTFE/white silicone septa, 6 mm hole ($\phi 9 \times 1$ mm)	100/PK
SC2-14	9-425 White polypropylene closed top screw caps (12 mm diameter) with red PTFE/white silicone septa ($\phi 9 \times 1$ mm)	100/PK
SC2-15	9-425 Blue polypropylene closed top screw caps (12 mm diameter) with white PTFE/red silicone septa ($\phi 9 \times 1$ mm)	100/PK
SC2-16	9-425 Black polypropylene closed top screw caps (12 mm diameter) with red PTFE/white silicone septa ($\phi 9 \times 1$ mm)	100/PK
SC2-20	9-425 Blue polypropylene screw caps (12 mm diameter) with white silicone septa ($\phi 9 \times 1$ mm)	100/PK

If you need additional models, we can assemble and adjust them based on different septa and caps.

10-425 2 mL Wide Screw-thread Vials

10-425 Screw-thread vials feature a wider neck than other screw-thread vials. The increased target area makes sample injection easier and reduces the chances of bending or breaking needles during sampling.



V3-T



V3-TL



V3-A



V3-AL

Cat. #	Description	O.D.xL	Qty.
V3-T	2 mL 10-425 Screw-thread vials, clear	11.6×32 mm	100/PK
V3-TL	2 mL 10-425 Screw-thread vials with write-on spot, clear	11.6×32 mm	100/PK
V3-A	2 mL 10-425 Screw-thread vials, amber	11.6×32 mm	100/PK
V3-AL	2 mL 10-425 Screw-thread vials with write-on spot, amber	11.6×32 mm	100/PK

Caps with Septa for 10-425 Screw-thread Vials



SC3-1



SC3-2



SC3-5



SC3-6

Cat. #	Description	Qty.
SC3-1	10-425 Black polypropylene screw caps (7 mm centre hole) with red PTFE/white silicone septa (φ10*1.5 mm)	100/PK
SC3-2	10-425 Black polypropylene screw caps (7 mm centre hole) with white PTFE/red silicone septa (φ10*1.5 mm)	100/PK
SC3-3	10-425 Black polypropylene screw caps (7 mm centre hole) with pre-slit red PTFE/white silicone septa (φ10*1.5 mm)	100/PK
SC3-4	10-425 Black polypropylene screw caps (7 mm centre hole) with pre-slit white PTFE/red silicone septa (φ10*1.5 mm)	100/PK
SC3-5	10-425 Black polypropylene closed top screw caps with white PTFE/red silicone septa (φ10*1.5 mm)	100/PK
SC3-6	10-425 White polypropylene closed top screw caps with white PTFE/red silicone septa (φ10*1.5 mm)	100/PK

If you need additional models, we can assemble and adjust them based on different septa and caps.

11 mm 2 mL Snap-top Vials

2 mL capacity, 11 mm snap-top vials provide a secure seal that minimizes evaporation, even with volatile samples.



V4-T



V4-TL



V4-A



V4-AL

Cat. #	Description	O.D.xL	Qty.
V4-T	2 mL 11 mm Snap-top vials, clear	11.6×32 mm	100/PK
V4-TL	2 mL 11 mm Snap-top vials with write-on spot, clear	11.6×32 mm	100/PK
V4-A	2 mL 11 mm Snap-top vials, amber	11.6×32 mm	100/PK
V4-AL	2 mL 11 mm Snap-top vials with write-on spot, amber	11.6×32 mm	100/PK

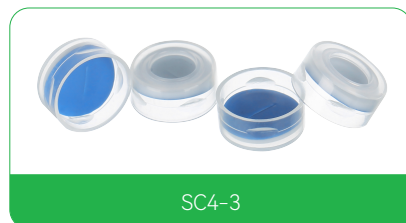
Caps with Septa for 11 mm Snap-top Vials



SC4-1



SC4-2



SC4-3

Cat.#	Description	Qty
SC4-1	Transparent polypropylene snap-top caps (6 mm centre hole, diameter 11 mm), with white PTFE/red silicone septa (φ11*1 mm)	100 Pcs / Box
SC4-2	Transparent polypropylene snap-top caps (6 mm centre hole, diameter 11 mm), with red PTFE/white silicone/red PTFE septa (φ11*1 mm)	100 Pcs / Box
SC4-3	Blue polypropylene snap-top caps (6 mm centre hole, diameter 11 mm), with blue PTFE/white silicone septa (φ11*1 mm)	100 Pcs / Box
SC4-4	Blue polypropylene snap-top caps (6 mm centre hole, diameter 11 mm), with white PTFE/red silicone septa (φ11*1 mm)	100 Pcs / Box

If you need additional models, we can assemble and adjust them based on different septa and caps.

11 mm 2 mL Crimp-top Vials

Crimp-top vials, 11 mm in openings and 2 mL in capacity, provide excellent sealing performance to prevent sample evaporation. The vials and corresponding 11 mm aluminum caps can be easily and quickly sealed by using a crimper.



Cat.#	Description	O.D.x L	Qty
V5-T	2 mL 11 mm Glass crimp-top vials, clear	11.6×32 mm	100 Pcs / Box
V5-TL	2 mL 11 mm Glass crimp-top vials with write-on spot, clear	11.6×32 mm	100 Pcs / Box
V5-A	2 mL 11 mm Glass crimp-top vials, amber	11.6×32 mm	100 Pcs / Box
V5-AL	2 mL 11 mm Glass crimp-top vials with write-on spot, amber	11.6×32 mm	100 Pcs / Box

Caps with Septa for 11 mm 2 mL Crimp-top Vials



Cat.#	Description	Qty
SC5-1	Silver aluminum caps (5.5 mm centre hole, diameter 11 mm), with white PTFE/red silicone septa (φ11*1 mm)	100 Pcs / Box
SC5-2	Silver aluminum caps (5.5 mm centre hole, diameter 11 mm), with red PTFE/white silicone septa (φ11*1 mm)	100 Pcs / Box
SC5-3	Silver aluminum caps (5.5 mm centre hole, diameter 11 mm), with red PTFE/white silicone/red PTFE septa (φ11*1 mm)	100 Pcs / Box
SC5-4	Silver aluminum caps (5.5 mm centre hole, diameter 11 mm), with white PTFE/red silicone pre-slit septa (φ11*1 mm)	100 Pcs / Box
SC5-5	Silver aluminum caps (5.5 mm centre hole, diameter 11 mm), with red PTFE/white silicone pre-slit septa (φ11*1 mm)	100 Pcs / Box

If you need additional models, we can assemble and adjust them based on different septa and caps.

13-425 4 mL Screw-thread Vials

13-425 Screw-thread vials, 13 mm in openings and 4 mL in capacity, can be used with Waters 48 position autosamplers or modules with similar configurations.



V6-T



V6-TL



V6-A



V6-AL

Cat.#	Description	O.D.x L	Qty
V6-T	4 mL 13-425 glass screw-thread vials, clear	15×45 mm	100 Pcs / Box
V6-TL	4 mL 13-425 glass screw-thread vials with write-on spot, clear	15×45 mm	100 Pcs / Box
V6-A	4 mL 13-425 glass screw-thread vials, amber	15×45 mm	100 Pcs / Box
V6-AL	4 mL 13-425 glass screw-thread vials with write-on spot, amber	15×45 mm	100 Pcs / Box

Caps with Septa for 13-425 4 mL Screw-thread Vials



SC6-1



SC6-2



SC6-3



SC6-5

Cat.#	Description	Qty
SC6-1	13-425 Black polypropylene screw caps, 8.5 mm centre hole, with white PTFE/red silicone septa (φ13*1.5 mm)	100 Pcs / Box
SC6-2	13-425 Black polypropylene screw caps, 8.5 mm centre hole, with red PTFE/white silicone septa (φ13*1.5 mm)	100 Pcs / Box
SC6-3	13-425 Black polypropylene screw caps, 8.5 mm centre hole, with red PTFE/white silicone/red PTFE septa (φ13*1.5 mm)	100 Pcs / Box
SC6-4	13-425 Black polypropylene screw caps, 8.5 mm centre hole, with natural PTFE/natural silicone septa (φ13*1.5 mm)	100 Pcs / Box
SC6-5	13-425 Black polypropylene closed-top screw caps, with natural PTFE/ natural silicone septa (φ13*1.2 mm)	100 Pcs / Box

If you need additional models, we can assemble and adjust them based on different septa and caps.

Headspace Vials

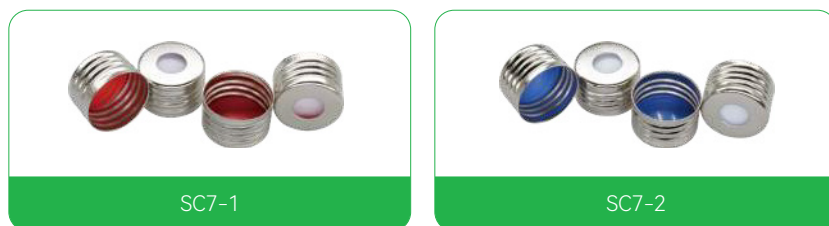
18 mm Screw-thread Headspace Vials

The 18 mm precision screw-thread headspace vials provide good sealing performance, suitable for gas chromatography headspace autosamplers. After collection, the samples can be directly stored in the screw-thread headspace vials, saving the subsequent sample transfer steps.



Cat. #	Description	O.D.x L	Qty
V7-10T	10 mL 18 mm Precision glass screw-thread headspace vials, rounded bottom, clear	22.5×46 mm	100 Pcs / Box
V7-10A	10 mL 18 mm Precision glass screw-thread headspace vials, rounded bottom, amber	22.5×46 mm	100 Pcs / Box
V7-20T	20 mL 18 mm Precision glass screw-thread headspace vials, rounded bottom, clear	22.5×75.5 mm	100 Pcs / Box
V7-20A	20 mL 18 mm Precision glass screw-thread headspace vials, rounded bottom, amber	22.5×75.5 mm	100 Pcs / Box

Caps with Septa for 18 mm Screw-thread Headspace Vials



Cat. #	Description	Qty
SC7-1	Silver magnetic metal caps (8 mm centre hole, 18 mm diameter), with blue PTFE/white silicone septa (φ17*1.5 mm)	100 Pcs / Box
SC7-2	Silver magnetic metal caps (8 mm centre hole, 18 mm diameter), with red PTFE/white silicone septa (φ17*1.5 mm)	100 Pcs / Box

If you need additional models, we can assemble and adjust them based on different septa and caps

20 mm Crimp-top Headspace Vials

Crimp-top headspace vials can be tightly sealed with aluminum caps by using a crimper, providing excellent sealing performance. They are suitable for gas chromatography headspace autosamplers.



Cat.#	Description	O.D.x L	Qty
V8-10T	10 mL 20mm Glass crimp-top headspace vials, flat bottom, clear	22.5×46 mm	100 Pcs / Box
V8-10T-R	10 mL 20mm Glass crimp-top headspace vials, rounded bottom, clear	22.5×46 mm	100 Pcs / Box
V8-10A	10 mL 20mm Glass crimp-top headspace vials, flat bottom, amber	22.5×46 mm	100 Pcs / Box
V8-10A-R	10 mL 20mm Glass crimp-top headspace vials, rounded bottom, amber	22.5×46 mm	100 Pcs / Box
V8-20T	20 mL 20mm Glass crimp-top headspace vials, flat bottom, clear	22.5×75mm	100 Pcs / Box
V8-20T-R	20 mL 20mm Glass crimp-top headspace vials, rounded bottom, clear	22.5×75 mm	100 Pcs / Box
V8-20A	20 mL 20mm Glass crimp-top headspace vials, flat bottom, amber	22.5×75 mm	100 Pcs / Box
V8-20A-R	20 mL 20mm Glass crimp-top headspace vials, rounded bottom, amber	22.5×75 mm	100 Pcs / Box

Caps with septa for 20 mm Crimp-top Headspace Vials



Cat.#	Description	Qty
SC8-1	Silver aluminum caps (10 mm centre hole, 20 mm diameter) , with white PTFE/white silicone septa (φ20*3 mm)	100 Pcs / Box
SC8-2	Silver aluminum caps (10 mm centre hole, 20 mm diameter) , with natural PTFE/natural silicone septa (φ20*3 mm)	100 Pcs / Box
SC8-3	Silver aluminum caps (10 mm centre hole, 20 mm diameter), with white PTFE/blue silicone septa (φ20*3 mm)	100 Pcs / Box
SC8-4	Silver aluminum caps (10 mm centre hole, 20 mm diameter), with natural PTFE/yellow silicone septa (φ20*3 mm)	100 Pcs / Box
SC8-5	Silver aluminum caps (10 mm centre hole, 20 mm diameter), with natural PTFE/blue silicone septa (φ20*3 mm)	100 Pcs / Box
SC8-7	Red bimetal magnetic aluminum caps (8 mm centre hole, 20 mm diameter), with blue PTFE/white silicone septa (φ20*3 mm)	100 Pcs / Box
SC8-8	Blue bimetal magnetic aluminum caps (8 mm centre hole, 20 mm diameter), with blue PTFE/white silicone septa (φ20*3 mm)	100 Pcs / Box
SC8-9	Silver aluminum caps (10 mm centre hole, 20 mm diameter), with grey PTFE/butyl rubber septa (φ20*3 mm)	100 Pcs / Box
SC8-10	Silver pressure-release aluminum caps (20 mm diameter), with white PTFE/white silicone septa (φ20*3 mm)	100 Pcs / Box

If you need additional models, we can assemble and adjust them based on different septa and caps

Storage Vials

15-425 Screw-thread Storage Vials

15-425 Screw-thread storage vials with 15 mm openings are made from first hydrolytic class glass and are available in 8 mL and 12 mL capacities. They are suitable for the long-term storage and transportation of samples and reagents, offering excellent sealing performance. Caps are available in different colors, including black and white. The septa are made of PTFE/silicone and can be customized according to requirements.



V12-8T



V12-12T



V12-8A



V12-12A

Cat.#	Description	O.D.x L	Qty
V12-5T	5 mL 15-425 Glass screw-thread storage vials, clear	18.0×40 mm	100 Pcs / Box
V12-5A	5 mL 15-425 Glass screw-thread storage vials, amber	18.0×40 mm	100 Pcs / Box
V12-8T	8 mL 15-425 Glass screw-thread storage vials, clear	16.6×60 mm	100 Pcs / Box
V12-8A	8 mL 15-425 Glass screw-thread storage vials, amber	16.6×60 mm	100 Pcs / Box
V12-12T	12 mL 15-425 Glass screw-thread storage vials, clear	18.4×66 mm	100 Pcs / Box
V12-12A	12 mL 15-425 Glass screw-thread storage vials, amber	18.4×66 mm	100 Pcs / Box

Caps with Septa for 15-425 Screw-thread Storage Vials



SC12-2



SC12-3



SC12-4

Cat.#	Description	Qty
SC12-2	15-425 Black polypropylene closed-top screw caps, with natural PTFE/natural silicone septa (φ13.5*1.5 mm)	100 Pcs / Box
SC12-3	15-425 White polypropylene closed-top screw caps, with natural PTFE/natural silicone septa (φ13.5*1.5 mm)	100 Pcs / Box
SC12-4	15-425 Black polypropylene screw caps, 9 mm centre hole, with natural PTFE/natural silicone septa (φ13.5*1.5 mm)	100 Pcs / Box

If you need additional models, we can assemble and adjust them based on different septa and caps

18-400 Screw-thread Storage Vials



Cat. #	Description	O.D. x L	Qty
V13-10T	10 mL 18-400 Glass screw-thread vials, clear	22×50 mm	100 Pcs / Box
V13-10A	10 mL 18-400 Glass screw-thread vials, amber	22×50 mm	100 Pcs / Box
V13-15T	15 mL 18-400 Glass screw-thread vials, clear	22×70 mm	100 Pcs / Box
V13-15A	15 mL 18-400 Glass screw-thread vials, amber	22×70 mm	100 Pcs / Box

Caps with septa for 18-400 Screw-thread Storage Vials



Cat. #	Description	Qty
SC13-1	18-400 Black polypropylene screw caps, 9.5 mm centre hole, with natural PTFE/natural silicone septa (φ17*1.5 mm)	100 Pcs / Box
SC13-2	18-400 Black polypropylene closed-top screw caps, with natural PTFE/natural silicone septa (φ17*1.5 mm)	100 Pcs / Box
SC12-3	18-400 White polypropylene closed-top screw caps, with natural PTFE/natural silicone septa (φ17*1.5 mm)	100 Pcs / Box

If you need additional models, we can assemble and adjust them based on different septa and caps

24-400 Screw-thread Storage Vials

24-400 Screw-thread storage vials with 20 mm openings are available in various capacities ranging from 20 mL to 60 mL. They are suitable for long-term storage and transportation of samples and reagents, offering excellent sealing performances. Caps are available in various colors, including black and white. The septa are made of PTFE/silicone and can be customized according to customer requirements.



V9-20T



V9-20A



V9-30T



V9-30A



V9-40T



V9-40A



V9-60T



V9-60A

Cat. #	Description	O.D. x L	Qty
V9-20A	20 mL 24-400 Glass screw-thread vials, amber	27.5×57 mm	100 Pcs / Box
V9-20T	20 mL 24-400 Glass screw-thread vials, clear	27.5×57 mm	100 Pcs / Box
V9-30A	30 mL 24-400 Glass screw-thread vials, amber	27.5×75 mm	100 Pcs / Box
V9-30T	30 mL 24-400 Glass screw-thread vials, clear	27.5×75 mm	100 Pcs / Box
V9-40A	40 mL 24-400 Glass screw-thread vials, amber	27.5×95 mm	100 Pcs / Box
V9-40T	40 mL 24-400 Glass screw-thread vials, clear	27.5×95 mm	100 Pcs / Box
V9-60A	60 mL 24-400 Glass screw-thread vials, amber	27.5×140 mm	100 Pcs / Box
V9-60T	60 mL 24-400 Glass screw-thread vials, clear	27.5×140 mm	100 Pcs / Box

Caps with septa for 24-400 Screw-thread Storage Vials



SC9-1



SC9-2



SC9-3



SC9-4

Cat. #	Description	Qty
SC9-1	24-400 White polypropylene screw caps, 15mm centre hole, with natural PTFE/natural silicone septa (φ22*3 mm)	100 Pcs / Box
SC9-2	24-400 White polypropylene closed-top screw caps, with natural PTFE/natural silicone septa (φ22*3 mm)	100 Pcs / Box
SC9-3	24-400 Black polypropylene screw caps, 15mm centre hole, with natural PTFE/natural silicone septa (φ22*3 mm)	100 Pcs / Box
SC9-4	24-400 Black polypropylene closed-top screw caps, with natural PTFE/natural silicone septa (φ22*3 mm)	100 Pcs / Box

If you need additional models, we can assemble and adjust them based on different septa and caps

20 mL Low Borosilicate Glass Scintillation Vials

Made of low-potassium borosilicate glass, it meets the requirements of UPSL type and ASTM F4381 type A, with low and uniform blank and high UV transmittance.



Cat.#	Description	O.D.x L	Qty
V10-20T	20 mL Low borosilicate scintillation vials, 22-400 screw-thread, clear	27.5x57 mm	100 Pcs / Box

Caps with Septa for 20 mL Low Borosilicate Glass Scintillation Vials



Cat.#	Description	Qty
SC10-1	22-400 Black closed-top caps, with natural PTFE/natural silicone septa	100 Pcs / Box
SC10-2	22-400 White closed-top caps, with natural PTFE/natural silicone septa	100 Pcs / Box

Manual Crimpers & Manual Decappers for Aluminum caps

Made of aluminum alloy with advanced forging technology
 Sprayed with black matte texture paint
 Designed for convenient handling



Cat.#	Description	Qty
YGQ-01	Manual crimper for 20 mm aluminum caps	1pcs/box
KGQ-01	Manual decapper for 20 mm aluminum caps	1pcs/box
YGQ-02	Manual crimper for 11 mm aluminum caps	1pcs/box
KGQ-02	Manual decapper for 11 mm aluminum caps	1pcs/box

BRAND PROFILE



Copure®, a brand of Biocomma, focuses on the field of food safety analysis.

We are committed to providing comprehensive solutions for chromatography sample preparation, bringing more reliable results of food safety testing.

Copure® Brand Definition

Copure——comma & consistent

'Co' are the initial letters of 'comma'. By using Biocomma's technology can achieve consistent recovery and reproducibility for each target.

Copure——pure

'Pure' means purity. Biocomma sample preparation products are able to remove the interfering parts in the sample, resulting pure chromatogram.

HH-YPP-01-001EN

Biocomma Limited

Add.: 1401~1406, Bldg. 12, Zhonghaixin Innovation Industrial Park, 12 Ganli 6th Rd., Jihua St., Longgang Dist., Shenzhen, Guangdong, 518114 P.R. China

Tel.: 86(755)-25431879

Web: www.biocomma.com

Email: info@biocomma.com